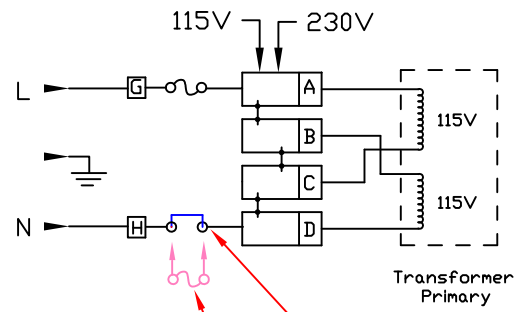
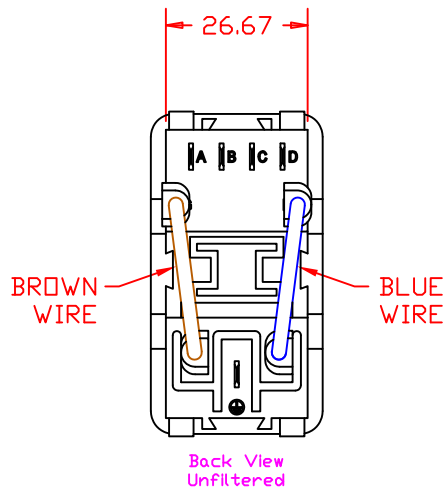


* Dimension for panel thickness of 0.8 to 2.0mm.
For panel thickness of 2.1 to 2.9mm, use value of 56.21mm.



Factory Installed Fuse Clip (Jumper) *
Double fuse option. *

* Note: Removal of the fuse clip allows the user the option of installing a second fuse for use in applications requiring double fusing.

THIS DOCUMENT AND ITS CONTENTS ARE THE PROPRIETARY CONFIDENTIAL PROPERTY OF INTERPOWER CORPORATION. NO USE OR COPIES MAY BE MADE WITHOUT WRITTEN PERMISSION FROM INTERPOWER CORPORATION.				DIMENSIONS IN MILLIMETERS		TITLE Prewired Module	
				DRAFT BY: DDF		DATE: 08/14/13	
				DRAFTING APPROVAL: DDF		DATE: 08/14/13	
				MATERIAL:		DO NOT SCALE	
						SHEET 1 OF 1	
B	Corrected typo in panel thickness: .08 to 0.8mm.	1/20/15	DDF	PART NUMBER:		83543520	
A	Introduction of product.	8/14/13	DDF	INTERPOWER CORPORATION			
REV	CHANGE DESCRIPTION	DATE	INITIALS				